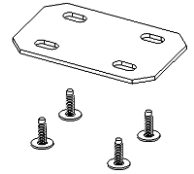


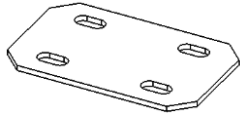
MWS30 Modular Installation

This document shows how to connect MWS30 Workstations and Tops together using the Metal Plate.

Note: If you cannot understand these instructions or are concerned about safety of the installation contact a qualified contractor or contact AVFI at 1-866-405-0655



Supplied Hardware per Workstation or Connecting Top



Connecting Plate
(2)



20mm Hex drive Bolt
(8)

Tools required

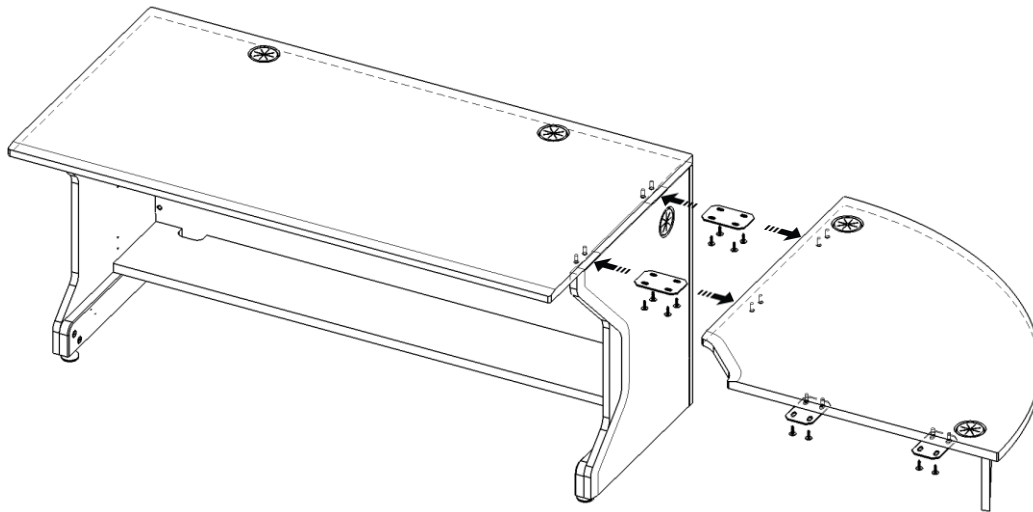


Allen key 4mm

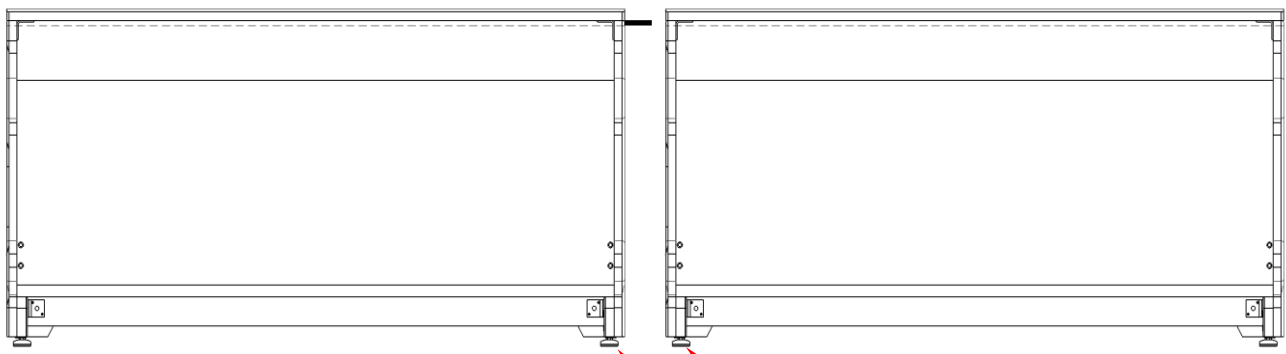


9/16" (14mm) Wrench or adjustable wrench for adjusting the levels

- 1 Introduce the plates through the side openings of the workstation and insert the bolts, but do not tight until connecting the other workstation or Connecting Top.



- 2 Make sure the workstations are leveled for the plates to fit properly. Tighten all screws once all is in place.



Adjust levelers



Installation
completed